

Art highlights

How to use the listings

Exhibitions are arranged by closing date. All events are free unless otherwise noted. For more exhibitions and venues, see www.timeoutsingapore.com/art

The Sew-Out Show

Until 8 Apr

Visitors can select their favourite section out of 11 digital artworks by Cain Lim from Affiniti design collective and have it printed onto a tote bag (\$190), document pocket (\$150) or phone cover (\$90) to take home with them.
tcc – The Gallery #51 Circular Rd (6479 2445, www.theconnoisseurconcerto.com), Raffles Place. Sun-Thu 11am-midnight; Fri & Sat 11am-2am.

Francesca Caruna: Between Eyes

Until 13 Apr

Around 40 works inspired by memories of the Oceanic region by the contemporary French artist are on show, including pieces in graphite, mixed media paintings and installations featuring ropes and bones.
Société Générale Gallery Alliance Française de Singapour, Level 2, 1 Sarkies Rd (6833 9314, www.alliancefrancaise.org.sg), Newton. Mon-Fri 11am-7pm; Sat 11am-5pm.

Choi Xooang: The Blind for the Blind

Until 13 Apr

The Korean sculptor, best known for his hyper-realistic portrayals of the human body, displays a series of new works depicting exaggerated or even mutilated figures.
Art Seasons #02-21/24 PoMo, 1 Selegie Rd (6741 6366, www.artseasonsgallery.com), Dhoby Ghaut. Tue-Sat 11am-7pm; Sun 1-6pm.

Psychotropics

Until 14 Apr

Five artists present their visions of the postcolonial landscape in the Philippines.
The Drawing Room #01-06 Gillman Barracks, 5 Lock Rd (6694 3289, www.drawingroomgallery.com), Labrador Park. Tue-Sat 11am-7pm; Sun 11am-6pm.

Tan Ngjap Heng: Journeys

Until 16 Apr

The exhibition is a photographic documentation of the local artist's overland journey from Singapore to London, spanning six months, 19 countries and 25,000km.
Objectifs 56A Arab St (6293 9782, www.objectifs.com.sg), Bugis. Mon-Fri 11am-7pm; Sat noon-6pm.

Zoological

5-19 Apr

Showcasing photographs, videos and installations by local and regional artists – including Ang Soo Nian, Heman Chong, John Clang and Zhao Renhui – that explore the human imprint on the urban landscape, this exhibition marks the re-opening of 2902 Gallery following its relocation.
2902 Gallery 222 Queen St (6339 8655, www.2902gallery.com), Bras Basah. Tue-Sun noon-7pm.

Of Spirit and Splendour – Barkcloth Art of the Omie

Until 20 Apr

A selection of 30 new works by the female artists of Papua New Guinea's remote Omie mountain villages around Mount Lamington are shown. These natural pigment-stained barkcloth are inspired by nature and ancestral tattoo designs.
ReDot Fine Art Gallery #02-06 Tanjong Pagar Distripark, ArtSpace@Helutrans.com (6222 1039, www.reidotgallery.com), Tanjong Pagar. Tue-Sat noon-7pm.

The Sovereign Asian Art Prize

Until 20 Apr

The ninth edition of this Asian art prize, with Singaporean artists Boo Sze Yang and Zhao Renhui among the shortlisted finalists featured in this showcase. See *Spotlight*.
Espace Louis Vuitton Singapore #B2-



Rodel Tapaya: The Ladder to Somewhere

5 Apr-30 Jun ARNDT

Enter a rich and colourful world of folklore and history through the renowned, award-winning Filipino painter's works.



Max Bashev: Special Thanks To...

Until 27 May 11.12 Gallery

Classical masterpieces take on a different style as this Russian artist gives them a Neo-Dadaist makeover in his works.

36, 2 Bayfront Ave (6390 3321, www.louisvuitton.com), Bayfront. Sun-Thur 10am-11pm; Fri & Sat 10am-midnight.

Anna Chiara Spellini: Vision and Verity

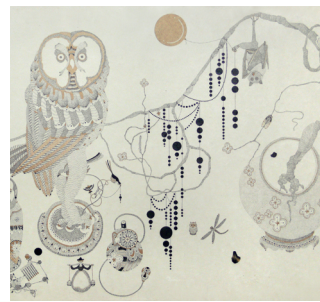
Until 21 Apr

Over 40 marble and bronze sculptures will be displayed alongside the centrepiece – a full scale reproduction of a vintage car in bronze that the artist shaped, cast and assembled by hand.
Nanyang Academy of Fine Arts Campus 1, 80 Bencoolen St (6512 4043, www.nafa.edu.sg), Bras Basah. Tue-Sun 11am-7pm.

Youngseok Cha: Chronic Circumstance

Until 21 Apr

The South Korean artist makes his debut solo exhibition in Singapore by showing a collection of drawings on paper, done in pencil, ballpoint pen and gold flakes and featuring random everyday objects such as pots, dolls and insects.
Space Cottonseed #01-24 Gillman Barracks, 47 Malan Rd (6694 3362, www.spacecottonseed.com), Labrador Park. Tue-Sat noon-7pm; Sun noon-6pm.



Youngseok Cha: Chronic Circumstance

Until 21 Apr Space Cottonseed

Drawings on paper with a mix of various objects integrated into the works from this South Korean artist, making his solo debut in town.

Charles LaBelle: Cinema Studies – Selection from the Dwelling Archive

Until 27 Apr

This exhibition shows a collection of 251 pencil drawings of cinemas taken from the American artist's on-going series, The Dwelling Archive.

Galerie Steph #01-05

Tanjong Pagar Distripark, 39 Keppel Rd (9176 8641, www.galeriesteph.com), Tanjong Pagar. Tue-Sat noon-7pm.

Saskia Olde Wolbers

Until 27 Apr

A new video work titled 'Pareidolia' by the Netherlands-born artist is based on the events surrounding the creation of Eugen Herrigel's book *Zen in the Art of Archery*.
Ota Fine Arts #01-23 Gillman Barracks, 47 Malan Rd (6694 3071, www.otafinearts.com/singapore), Labrador Park. Tue-Sat noon-7pm; Sun noon-6pm.

The Big SMALL Show

18 Apr-11 May

30 artists showcase a series of mini-works – all 100cm or smaller in size – which are meant to be viewed in the larger context of contemporary art in Asia.
Art Seasons See Until 13 Apr for details.



Anna Navasardian: Kids

Until 12 May

The young Armenia-born, America-based artist displays a series of life-sized portraits; she is known for inviting her subjects for lengthy sessions to capture their true selves after their public personas fade away.

Michael Janssen Gallery #02-21 Gillman Barracks, 9 Lock Rd (9021 0872, www.galeriemichaeljanssen.de), Labrador Park. Tue-Sat noon-7pm; Sun noon-6pm.

Nyein Chan Su: Memories for the Future

26 Apr-19 May

The paintings by the Burmese artist depicts the protests and expectations of Myanmar's muted population as the country begins to open up and political reforms start to happen.
Société Générale Gallery See Until 13 Apr for details.

Justin Yoke: The Seven Scenes of Barry Lyndon

26 Apr-20 May

The local artist's newest installation features paintings based on scenes from Stanley Kubrick's 1975 period film *Barry Lyndon*. The exhibition space will also be transformed to reflect the scenes depicted in the works.

Objectifs 56A Arab St (6293 9782, www.objectifs.com.sg), Bugis. Mon-Fri 11am-7pm; Sat noon-6pm.

Thukral & Tagra: Windows of Opportunity

Until 25 May

The Indian artist duo's latest works explore the younger generation's hope to escape from India to go abroad, and the challenges they face. See *Main Feature*.

Art Plural 38 Armenian St (6636 8360, www.artpluralgallery.com), City Hall. Mon-Sat 11am-7pm.

John Clang: Being Together – Family & Portraits

Until 26 May

90 works from across five series by the internationally renowned local photographer will be displayed alongside images from the National Museum's own collection.
National Museum of Singapore 93 Stamford Rd (6332 3659, www.nationalmuseum.sg), Bras Basah. Daily 10am-6pm. \$11; students & seniors \$5, family package \$30. Free admission for students and NTUC card holders daily 10am-8pm.

Max Bashev: Special Thanks To...

Until 27 May

The Moscow-born artist takes a selection of classical masterpieces by Dali and Da Vinci amongst others and repaints them to incorporate present-day social issues.

11.12 Gallery #04-02, 36 Armenian St (6636 7738, www.11-12gallery.com), City Hall. Mon-Sat noon-7pm.

Tim Wakefield: Soundwaves

26 Apr-31 May

By using digital technology, the British artist expresses iconic rock songs as soundwave patterns on canvas. See *Cheat Sheet*.

Icon Gallery 476 River Valley Rd (6735 4550, www.icongallery.sg), Clarke Quay. Tue-Sat 10.30am-6.30pm; Sun 11am-5pm.

Rodel Tapaya: The Ladder to Somewhere

5 Apr-30 Jun

The Filipino artist makes references to the myths and history of his native country.
ARNDT #01-35 Gillman Barracks, 22 Lock Rd (www.arndtberlin.com), Labrador Park. Tue-Sat noon-7pm; Sun noon-6pm.

Luciano Ventrone: Sui Genri/s

Until 2 July

More than 50 paintings by the Italian figurative artist are displayed, including still-life pieces as well as portraits.
Partners & Mucciacchia #01-10 Gillman Barracks, 6 Lock Rd (6694 3777, www.partnersandmucciacchia.com), Labrador Park. Tue-Sat noon-7pm; Sun noon-6pm.